

# TELL GOOD STORIES OF HONG KONG

## HONG KONG THE GREEN CITY

### GREEN DECK “THE HARBOUR OASIS”

ADDING 3 ha OF GREEN PARK in the middle of the built-up urban area



**3/4**

land in Hong Kong are  
**COUNTRY PARKS AND  
GREEN AREAS** (PlanD)

**90%**

of population  
**WITHIN 400m  
FROM A PARK**  
(Hong Kong 2030+)

**85%**

of population  
**WITHIN 3km ENVIRONS  
OF A COUNTRY PARK**  
(Hong Kong 2030+)

**3<sup>rd</sup>**

in City Nature Challenge  
**IN NUMBER OF SPECIES**  
(2022)

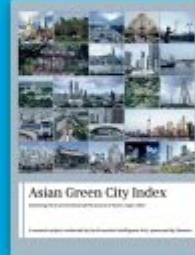
Occupying only about **0.03% OF CHINA TOTAL MARINE AREA**, Hong Kong's marine ecosystems support  
**~26% OF ALL THE MARINE SPECIES** recorded in China. (Hong Kong Biodiversity Lab)





# HONG KONG AS LEADER OF SUSTAINABLE URBAN DEVELOPMENT

HONG KONG **No. 1** in  
LAND USE AND BUILDINGS  
in **Asia Green City Index 2022**



4.2% of HONG KONG's LAND  
is OCCUPIED BY ROADS and  
TRANSPORT FACILITIES,  
if **just 1% of it is decked  
over**, about 47 ha of new  
land will be created  
for urban development



HONG KONG IS LEADER IN  
SMART GREEN RESILIENT  
urban development



SMART FEATURES  
within Green Deck development

GREEN DECK'S  
BENEFITS TO THE  
ENVIRONMENTS  
AND HEALTH IN AN  
URBAN SETTING



CARBON REDUCTION



REDUCE HEAT ISLAND EFFECT



ENCOURAGE ACTIVE LIFESTYLE



IMPROVE WALKABILITY





# HARBOUR OASIS AS AN EXEMPLAR OF MULTIPLE LAND USES ON A SINGLE PLOT OF LAND

D/F: LANDSCAPED PARK  
(About 24,300m<sup>2</sup>)  
(partially on M/F north deck)



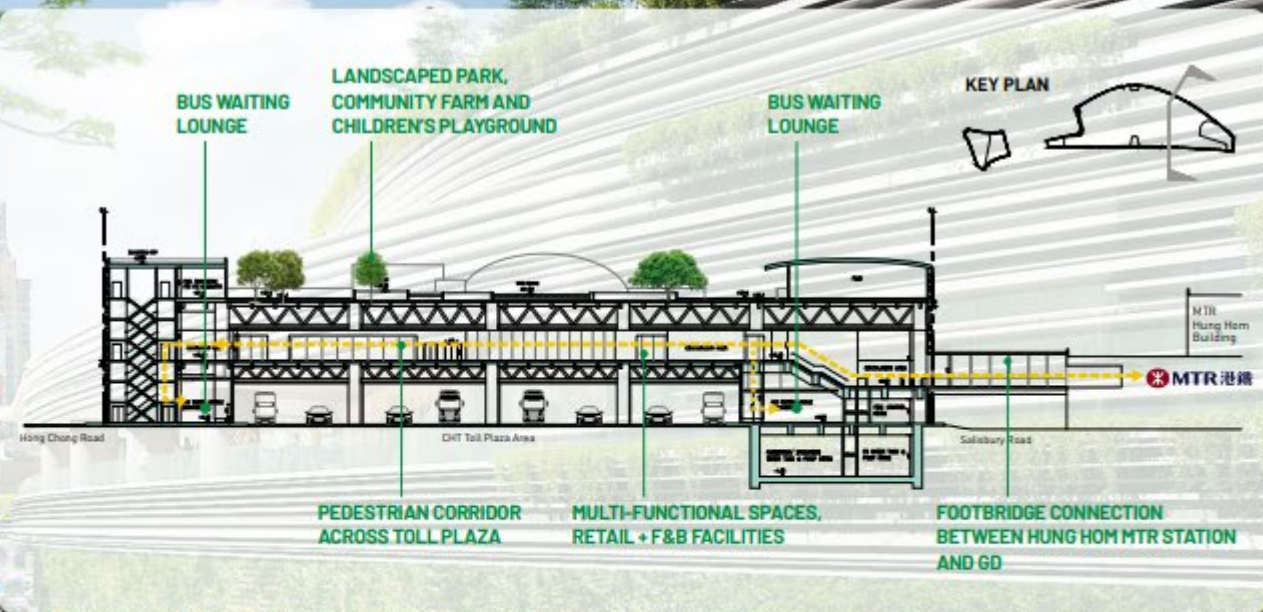
M/F: FUNCTIONAL AREAS  
to drive community development  
across different social groups



G/F: AIR-CONDITIONED BUS WAITING LOUNGES



## 3D LAND DELINEATION PLANNING PRINCIPLE





## GREEN DECK

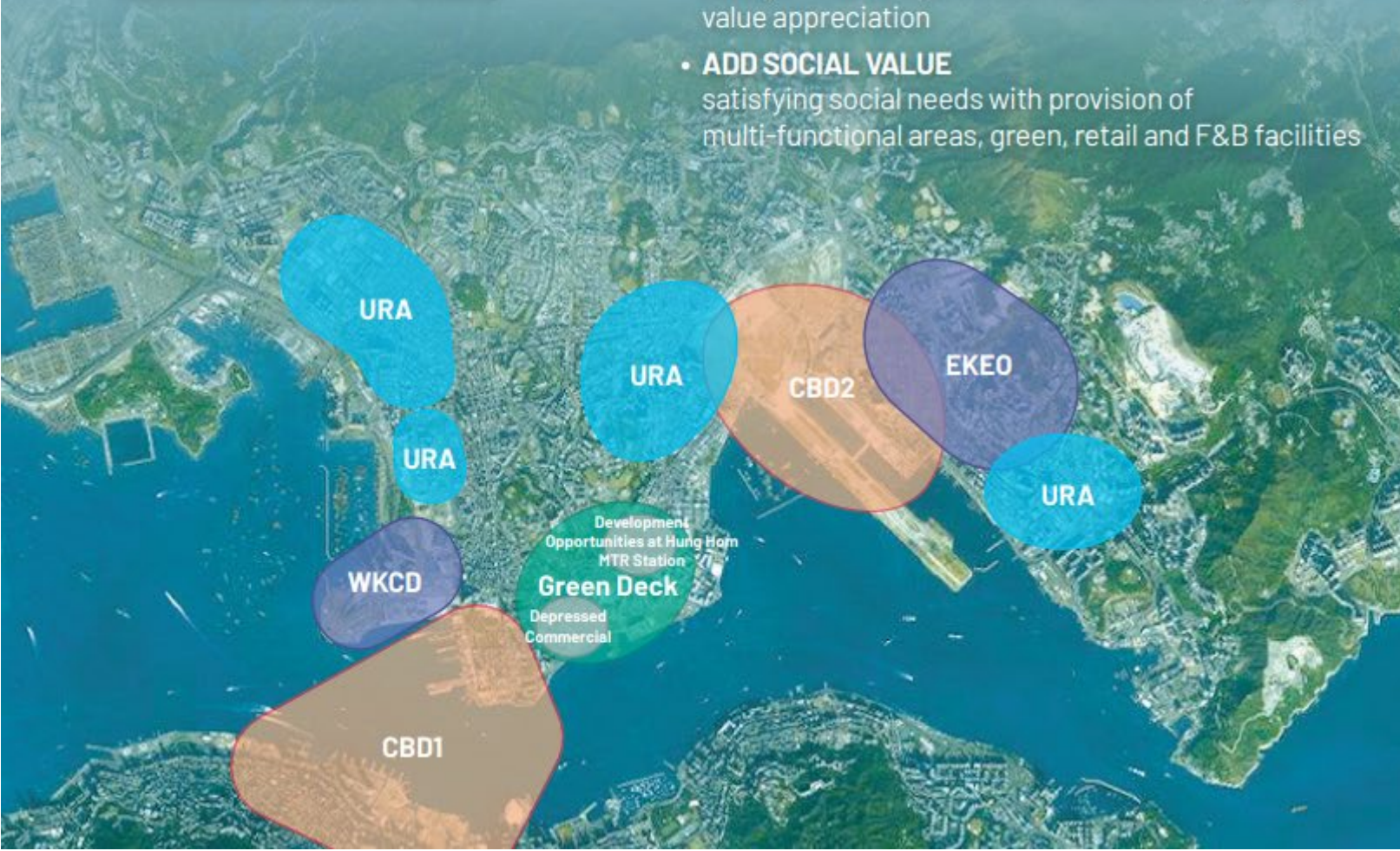
# ANOTHER HIGHLIGHT OF HONG KONG SUCCESSFUL URBAN REGENERATION

Impetus for successful urban regeneration

- **SUSTAINABLE URBAN RENEWAL FOLLOWING UN SDG 17 GOALS**

Green Deck will spark off SGR urban regeneration

- **ADD ECONOMIC VALUE**  
catalyst of urban generation that induce property value appreciation
- **ADD SOCIAL VALUE**  
satisfying social needs with provision of multi-functional areas, green, retail and F&B facilities



## MOST SUCCESSFUL REAL ESTATE PROJECTS IN ASIA

### KOWLOON STATION HONG KONG (1992-2009)

- GFA: **111,480m<sup>2</sup>**
- Masterplan for a **High-density, three-dimensional Transit-oriented Urban Quarter**
- One of the world's largest station air rights developments - hotel, office, retail and residential around a central square above the Kowloon station
- Home to the **118-storey ICC**, HK's **tallest building**



### ROPPONGI HILLS, TOKYO JAPAN (1986-2003)

- Site area: **11.6 ha**
- Located in **The Cultural Heart of Tokyo**
- Included commercial, cultural functions, with parks and plazas
- Mori Tower: educational and conference facilities and a public observation deck



### HUNG HOM STATION COMPLEX

- MTR Hung Hom Building
- Multi-storey Car Park
- Former International Mailing Centre Site





# INTEGRATE PEOPLE, CULTURE AND NATURE

## PEOPLE

Local and Visitor

## CULTURE

Cultural belt in Kowloon Peninsula

## NATURE

Bring the Harbour to People appreciate Natural Asset



## CASE STUDY HIGH LINE



## LOCAL/POP CULTURE

Green Deck could become a venue to promote local pop-art, movies, Cantonese songs, comedians, etc., complimenting Hong Kong Coliseum.



ARUP